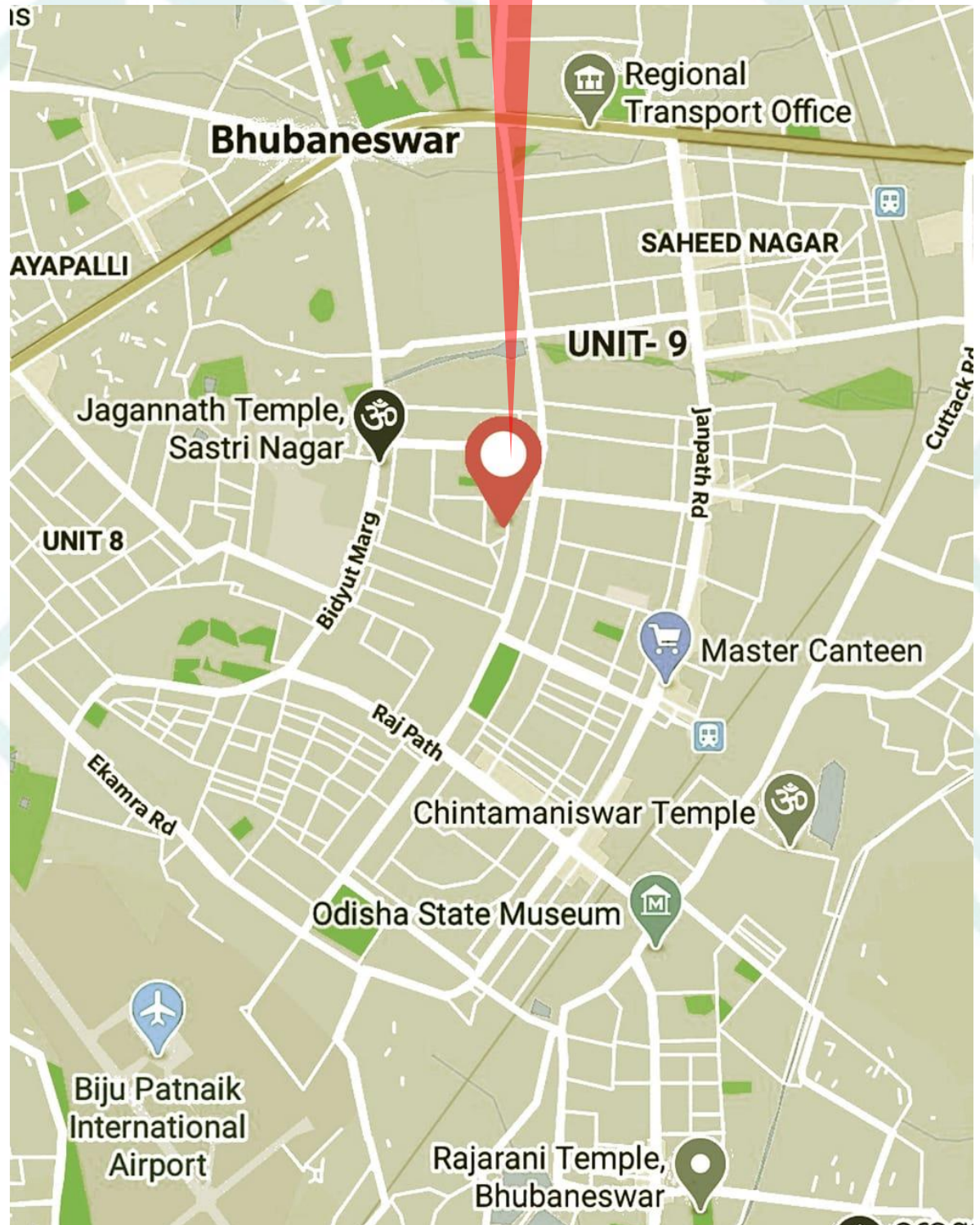


An exclusive address at **unit 4**  
coming soon ..

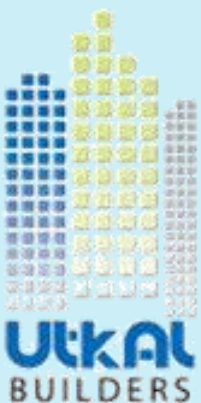


UTKAL  
ASPIRE

# Location Map



## Project by



### Connectivity

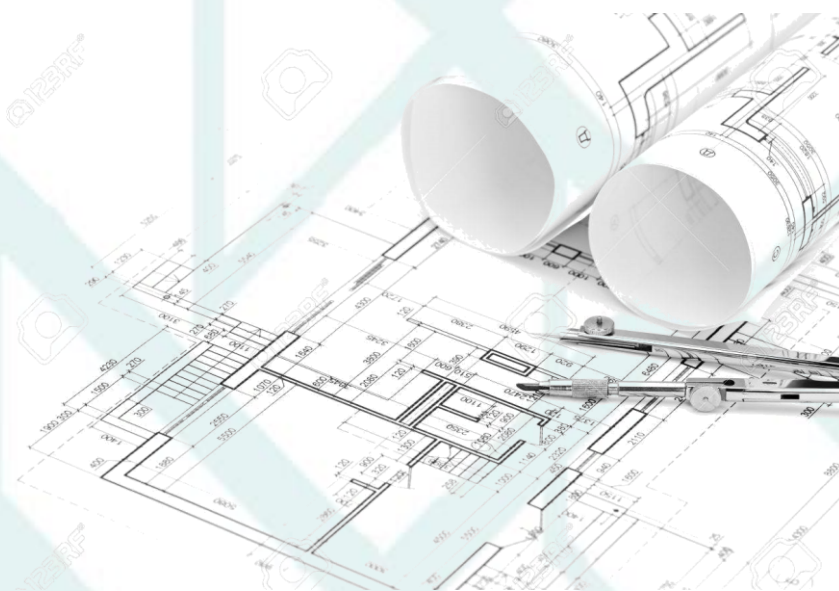
- 4.0 kms from Airport.
- 2.2 kms from Railway station.
- 2.5 kms from Acharya Vihar Square.
- 3.0 kms from Jaydev Vihar Square.
- 0.9 kms from PMG square.



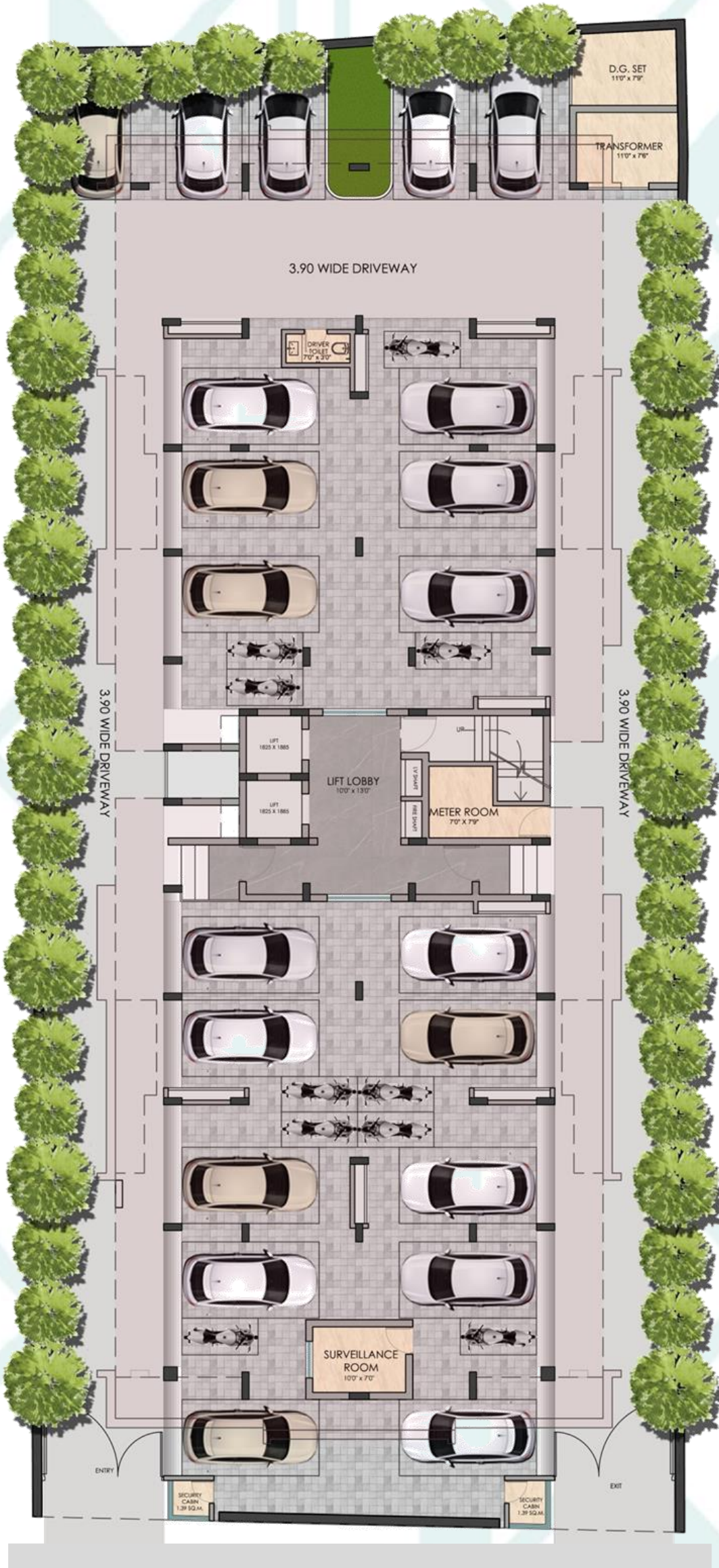
UTKAL  
ASPIRE



A Living Aspiration . .



## FLOOR PLANS



- ### KEY FEATURES
- covered parking
  - Security cabin
  - Society Office
  - Exclusive lobby
  - Drop-off loop

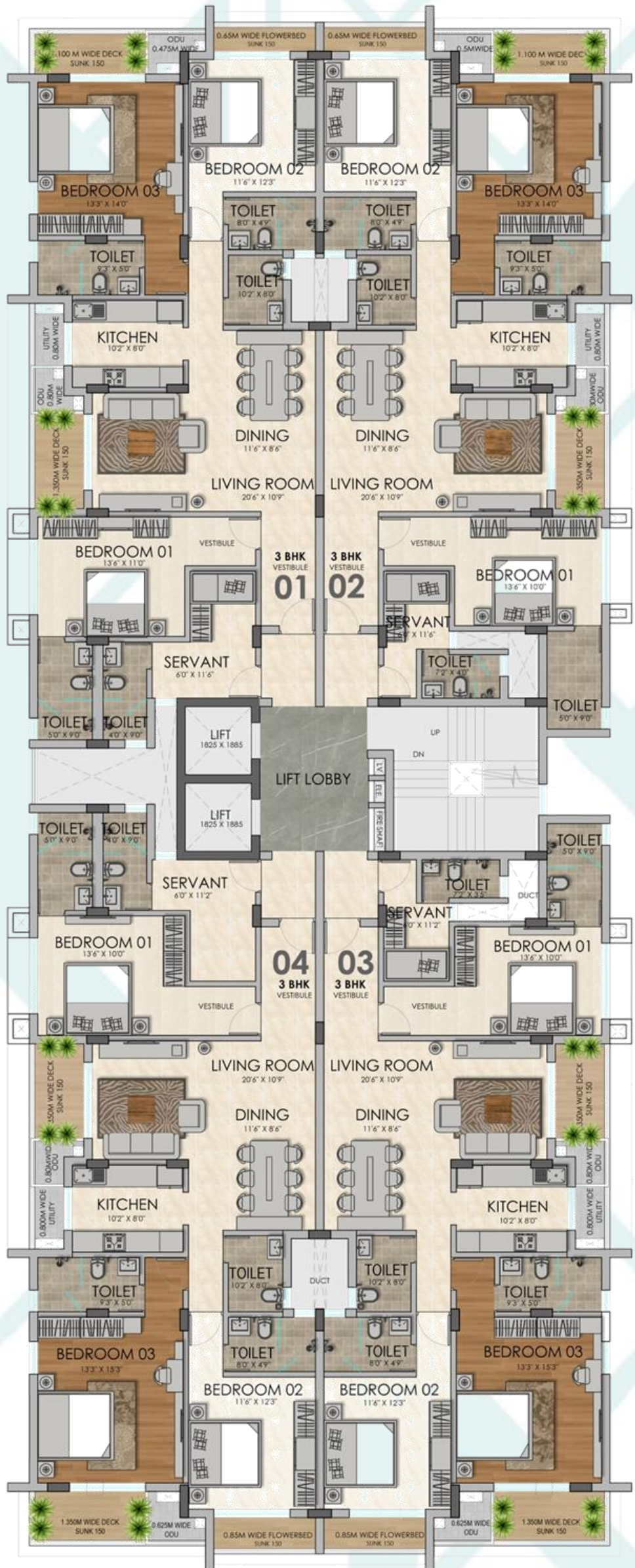
GROUND FLOOR  
STILT LEVEL

Unit 4 Main Street



# Super BUA

- Apt 01 : 2073 sqft
- Apt 02 : 2007 sqft
- Apt 03 : 2064 sqft
- Apt 04 : 2129 sqft



TYPICAL PLAN  
1<sup>ST</sup> TO 4<sup>TH</sup> FLOOR



3BHK VIEW 01



3BHK VIEW 02

ISOMETRIC VIEW : TYPICAL 3 BHK



UTKAL  
ASPIRE



A Living Aspiration . .





An exclusive address at **unit 4**  
Bhubaneswar

Principal Architects



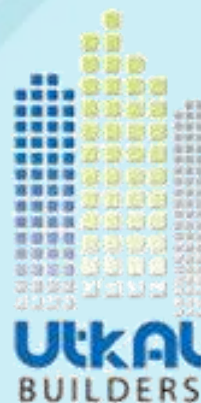
Structural Consultant

**P. DAS & ASSOCIATES**  
Bhubaneswar, Odisha

Landscape Consultant

**DESIGN ACCORD**  
New Delhi

Project by



777, Maharishi College Rd, Saheed Nagar, Bhubaneswar, Odisha 751007